

Intel DN2820FYKH NUC BIOS settings after BIOS Update or with booting of WIN7/WIN8

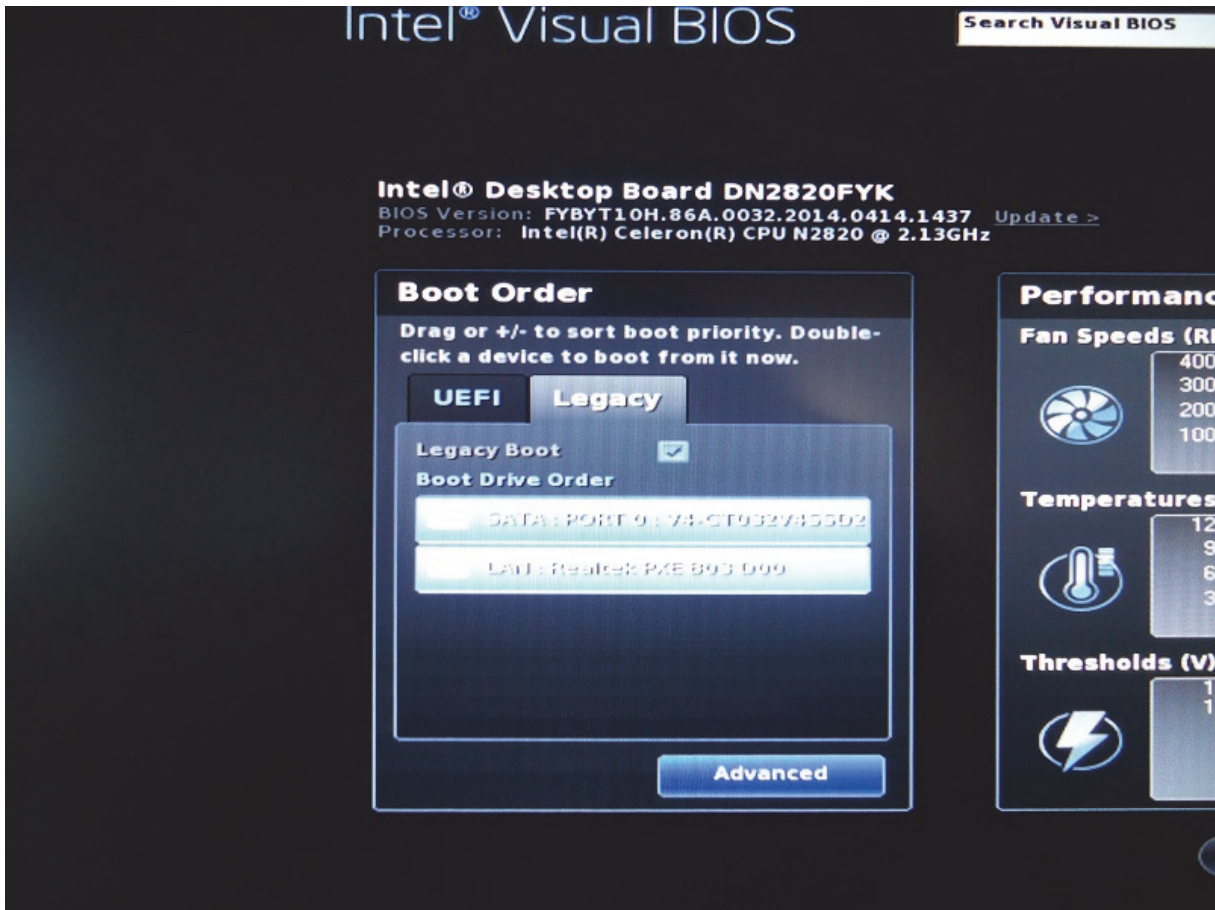
Since 14.04.2014 there is a new BIOS version available for Intel DN2820FYKH.

With this new version you might not be able to boot anymore from USB or HDD.

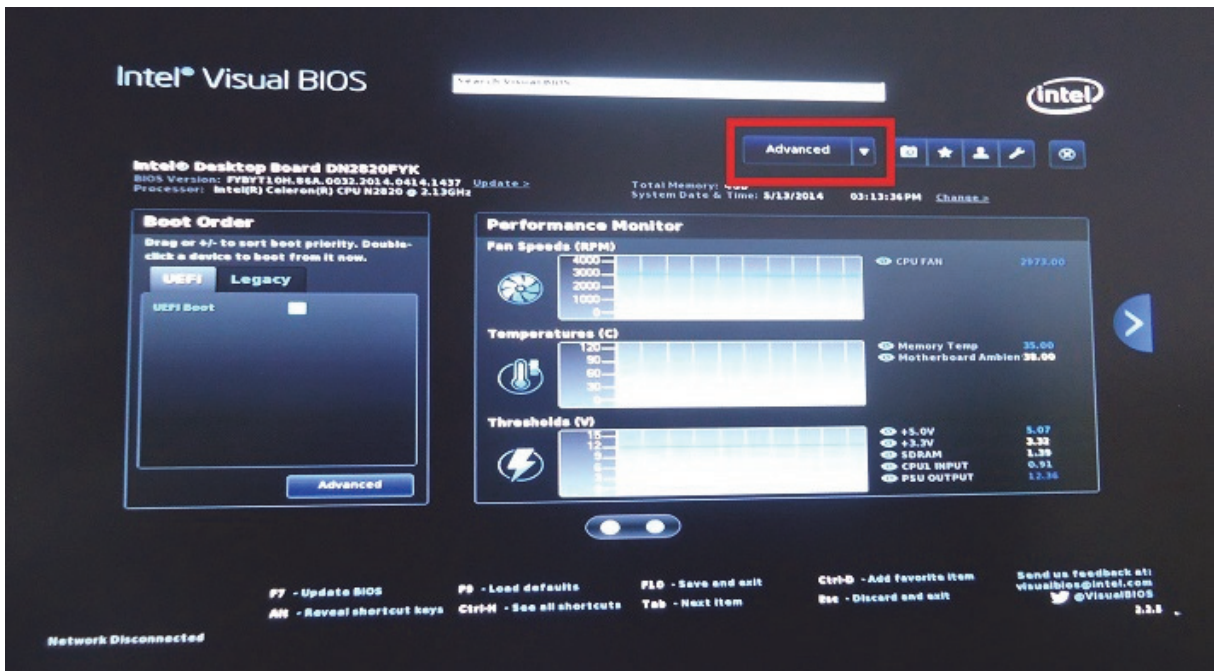
The following settings will fix that.

Upon booting press „F2“ for entering BIOS.
Uncheck „UEFI Boot“ so that option „Legacy“ is marked only.

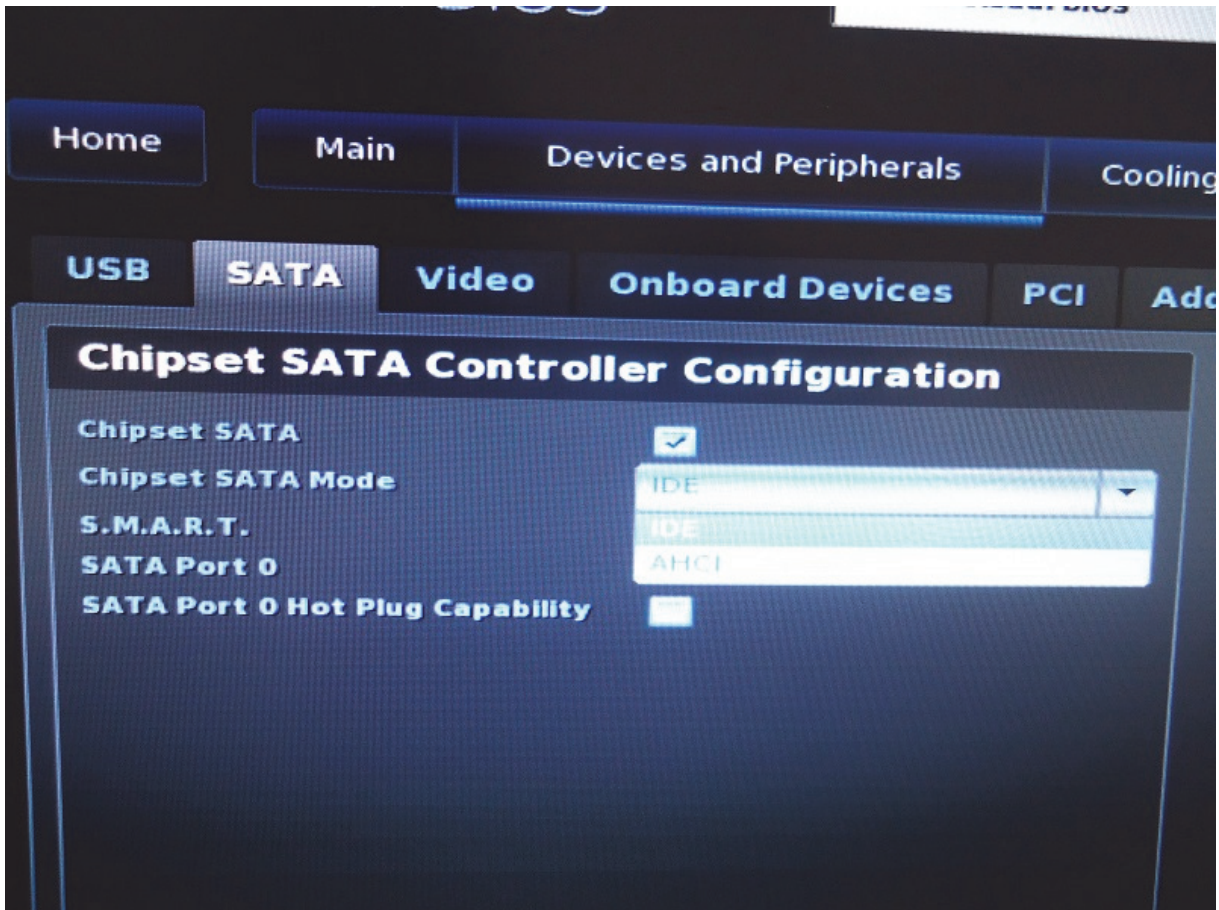




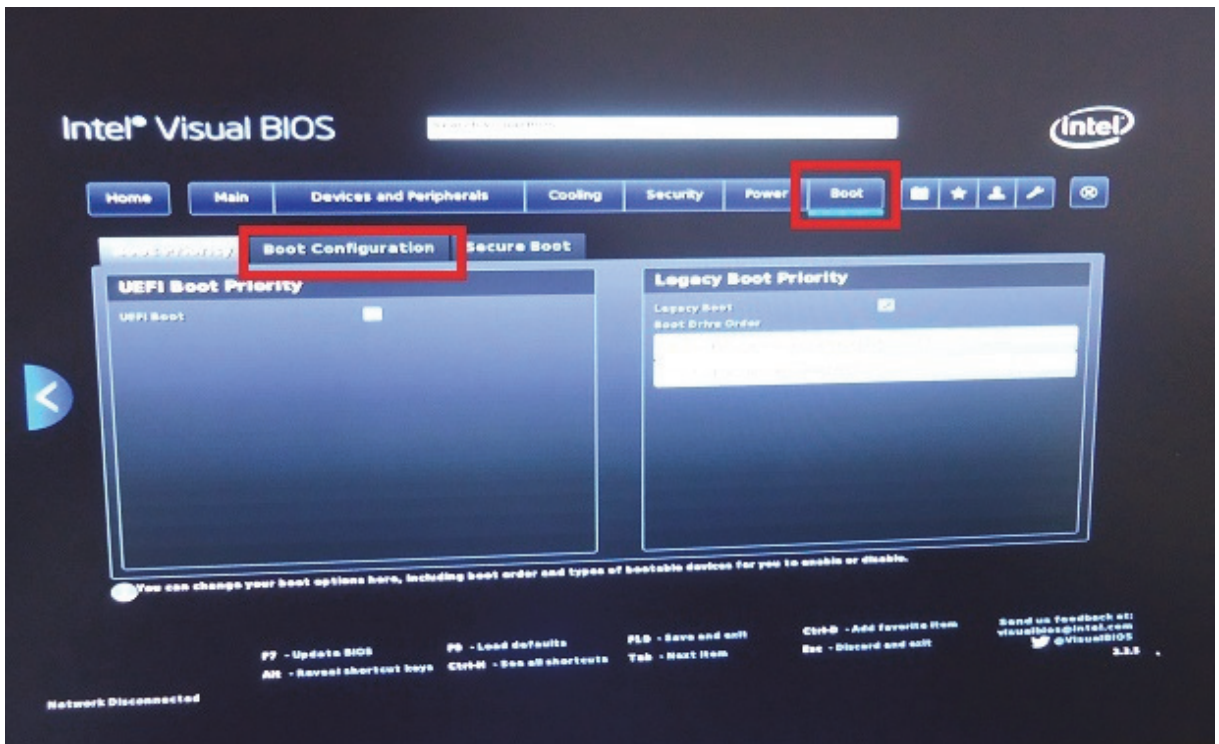
Choose „Advanced“.



With „Devices and Peripherals“ go to „SATA“
And set „Chipset SATA Mode“ to „IDE“ or „AHCI (recommended)“.

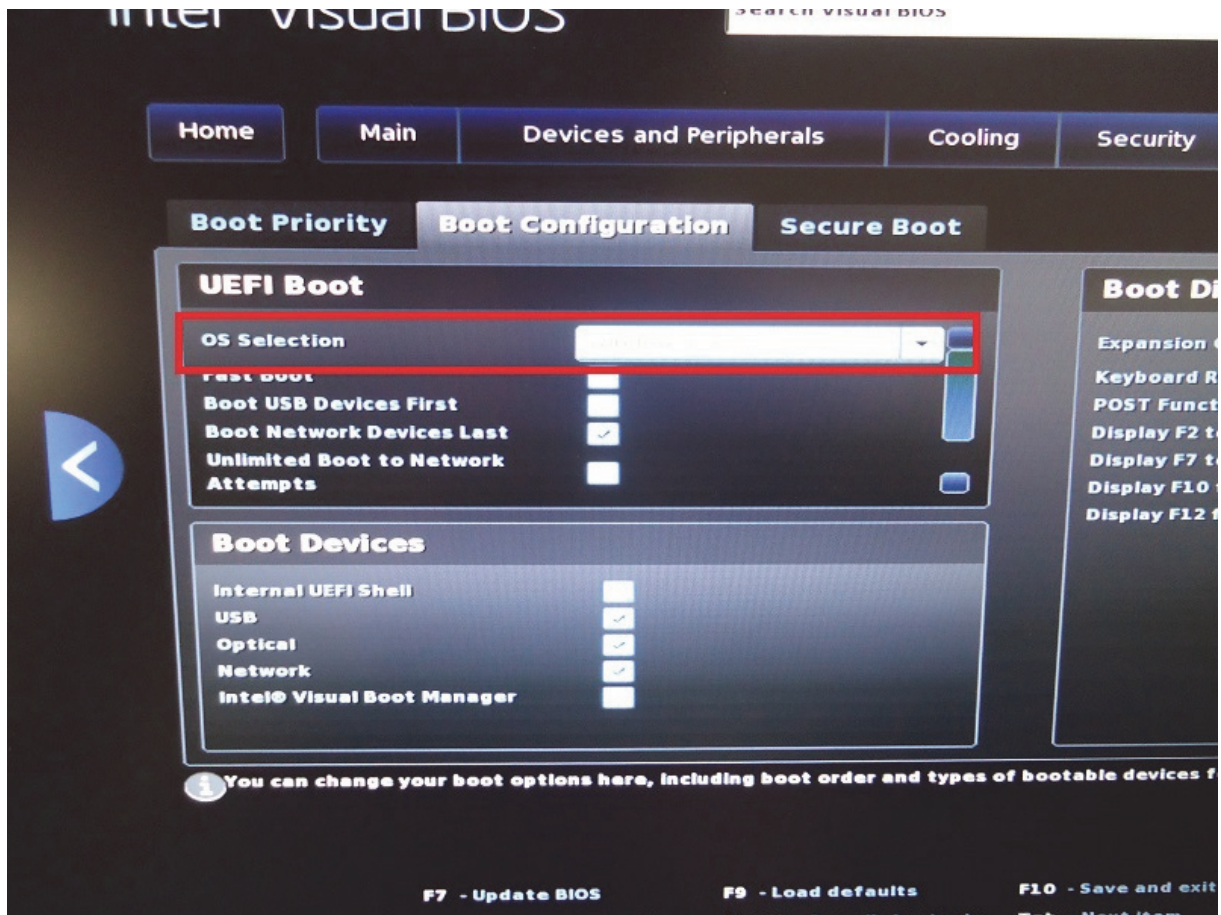


Go to section „Boot“ in directory „Boot Configuration“



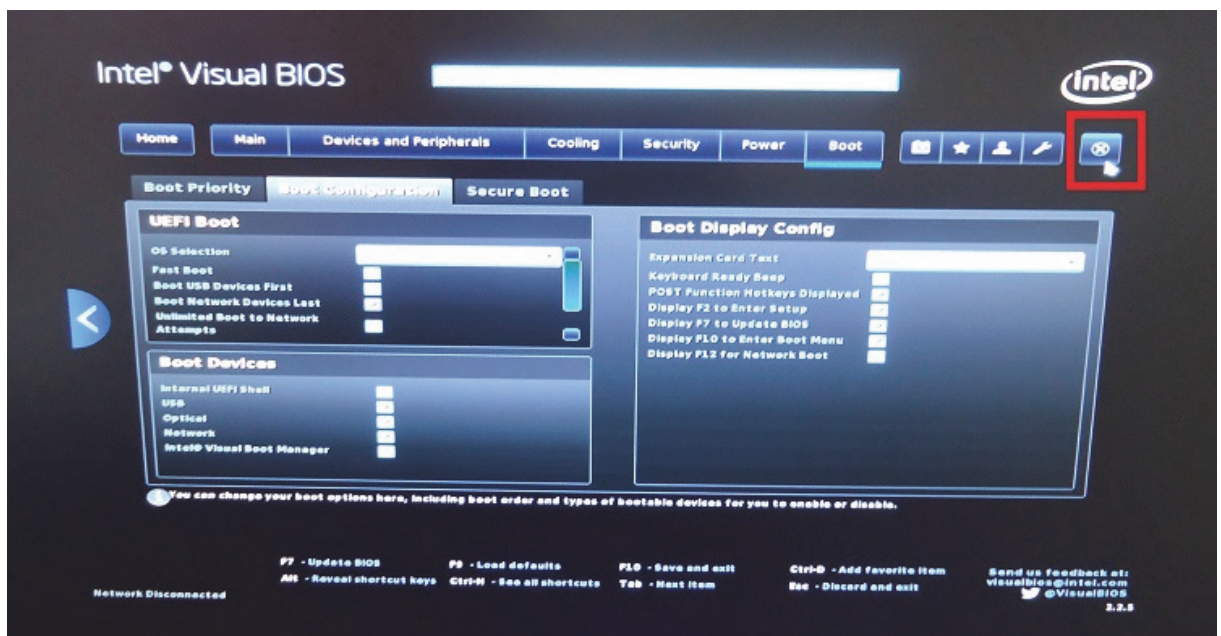
After BIOS Update there is a new option „OS Selection“.
Set to „Windows 7“.

Set to „Windows 8“ only if your Windows installation was done in UEFI mode.





Save the settings.



Now you are able to boot your HDD or USB drive again.

13.05.2014, CarTFT.com